



LANDesk® Mobility Manager

The User is the Endpoint

Discover | Extend | Secure | Empower

Discover, Extend, Secure and Empower

Problems Solved

- Workforce Segmentation
- Unauthorized Devices
- Access/Request
- Device Configuration
- Password/Security
- Device Diversity
- Policy-Based Management
- User Self-Service
- BYOD (Bring-Your-Own-Device)
- Remote Lock/Wipe

The explosive growth of mobile devices in the workplace has created unique challenges for IT who need to know: 1) what is connected to their network; 2) that the devices connected on the network are managed and secured; and 3) that IT staff have the ability to remotely manage those devices when a problem or incident arises.

Leveraging your organization's investment in managing desktops and laptops is quite an undertaking. Choosing the right set of tools to help you integrate, implement and manage mobile devices into that existing infrastructure is just as critical in managing your complete IT infrastructure.

LANDesk® Mobility Manager solves these problems by applying renowned LANDesk® discovery, inventory, security and management capabilities to mobile devices from a single, easy-to-use console. The solution offers the flexibility needed to proactively manage mobile devices.

Workforce Segmentation

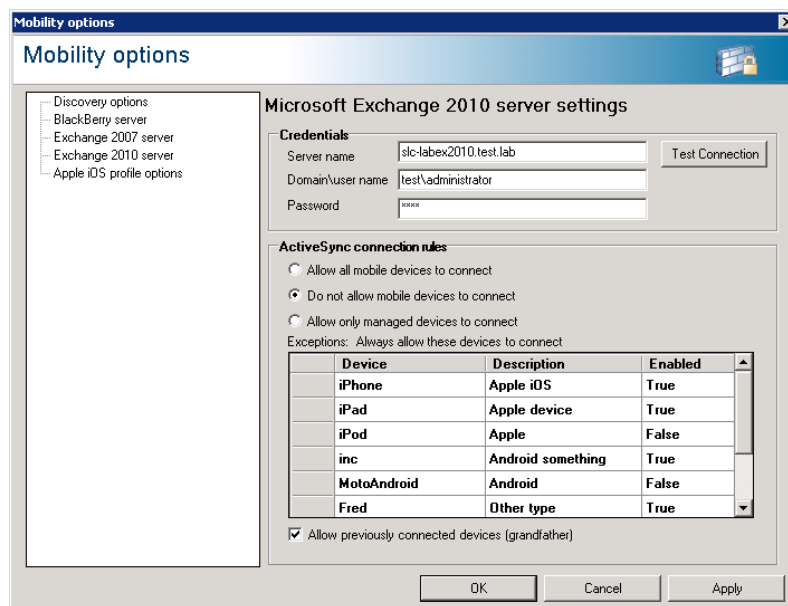
IT organizations want the ability to segment their workforce when managing mobile devices. Workforce segmentation is the ability to personalize the IT experience to move beyond a one-size-fits-all approach to save costs and increase satisfaction with workplace technologies. LANDesk Mobility Manager employs a sophisticated method of enrolling devices based on policies, and enables IT managers to *extend* content to users based on roles and responsibilities within their organization.

Device Configuration

Once your organization has full visibility to all enterprise-connected mobile devices and tablets, it's important to offer a simple method of enrollment. LANDesk Mobility Manager offers profile policy by user/AD Container, which is as simple as configuring email. Once the device is enrolled, LANDesk Mobility Manager automatically installs the agent, applies the device configuration and implements the desired security policy for *secure* use.

Unauthorized Devices

With more employees wanting to bring their smart phones and tablets to work, the line between personal and business use is more blurred now than ever. LANDesk Mobility Manager will *discover* devices within the environment and prevent unmanaged devices from connecting to the network, which offers the ability to limit access by device type and the flexibility to “grandfather” existing devices already part of your IT infrastructure.



Self-Service

While some IT environments work well with a self-service approach, there are a number of examples where a mobile device management solution is more appropriate. LANDesk Mobility Manager offers the best of both worlds—the ability to manage devices from a single console while enabling IT organizations to *empower* the user with self-service options within the LANDesk® application portal.



As shown below, LANDesk Mobility Manager simply installs on top of your current LANDesk® Management Suite 9.0 Core Server, plus the addition of the cloud-facing components in the DMZ. The only new piece of infrastructure in your environment is the LANDesk Mobility Manager MDM (Mobile Device Management) Server. The same, familiar console is used to manage the new devices.

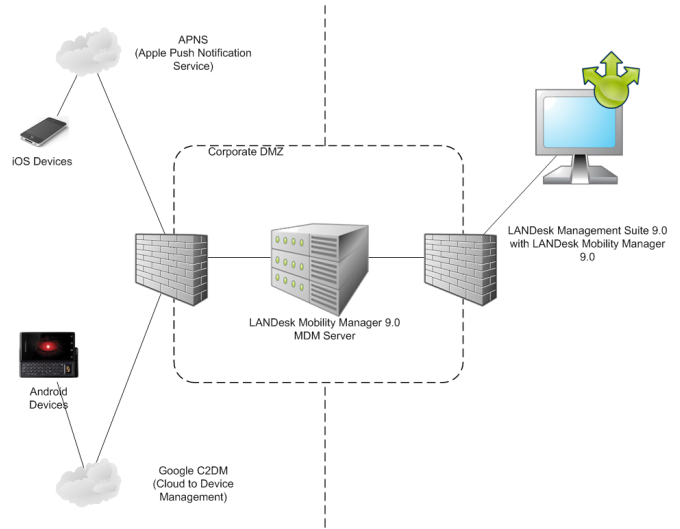


Chart of Features and Benefits

Capability	Features	Supported Devices	Benefits
Simplified enrollment w/ Active Directory and automated certificate provisioning	User downloads the LANDesk Mobility agent from the LANDesk application portal and inputs credentials to bring device under management	<ul style="list-style-type: none"> ■ iPhone ■ iPad ■ Android devices 	Enable device users to download, install and activate device management capabilities easily
Extended hardware and software inventory	Provides extended hardware and software inventory, including installing applications, policies, memory, battery and network information	<ul style="list-style-type: none"> ■ iPhone ■ iPad ■ Android devices 	Determine if a device is compliant, if action should be taken or policies should be distributed
Jailbreak/rooting detections reporting	Detects and reports about jail-broken/ rooted devices	<ul style="list-style-type: none"> ■ iPhone ■ iPad ■ Android devices 	Determine if a device is compliant, if action should be taken or policies should be distributed
Zero-touch management	Updates hardware and software, and jailbreak/root status	<ul style="list-style-type: none"> ■ iPhone ■ iPad ■ Android devices 	Provide administrator updates without user intervention
Find-my-phone and location history	Generates periodic reports on device's current location and a breadcrumb trail of past locations	<ul style="list-style-type: none"> ■ iPhone ■ iPad ■ Android devices 	Know where a phone is or previous phone locations
Remote lock and wipe	Enables lock and wipe command to a remote device and allows selective wipe of PIM data	<ul style="list-style-type: none"> ■ iPhone ■ iPad ■ Android devices 	Remotely lock or wipe a device if lost or stolen and wipe sensitive PIM data
LANDesk application portal for self-service software distribution	Repository where enterprise resources such as apps, files, videos and other corporate resources can be accessed	<ul style="list-style-type: none"> ■ iPhone ■ iPad ■ Android devices 	Provide the enterprise with a centralized "app store" for corporate resources that can be accessed whenever and wherever users need
Leverages device platforms' native push notification services	Enables notification service to alert device users about the availability of new resources through the LANDesk application portal or other required user actions	<ul style="list-style-type: none"> ■ iPhone ■ iPad ■ Android devices 	Stay up-to-date with applications and other enterprise resources
Specify and invoke all native iOS/ Android policies	Specify and enable the native iOS and Android policies	<ul style="list-style-type: none"> ■ iPhone ■ iPad ■ Android devices 	Invoke supported device policies directly from the LANDesk console

Key Features

LANDesk Application Portal

- Distribute apps built in-house without submitting to the horizontal app stores (i.e. Apple iTunes, Android Marketplace)
- Launch links in a controlled browser, limiting where users can surf
- Link to “suggested” applications from multiple horizontal app stores
- Share documents, policies and homegrown applications to one or many users

Device Connection Policy

- Block unwanted devices from connecting to Exchange ActiveSync
- Allow “grandfathered” devices so as to not disturb existing EAS users

Simple Device Enrollment

- Easily allow users to self-configure their BYOD devices
- Simply provision new IT-owned devices
- Policy based by AD integration

Detailed Hardware Inventory

- Make
- Manufacturer
- OS
- Many more elements

Device Configuration/Security

- All iOS4 MDM policies implemented
- All Android 2.2+ policies implemented
- SCEP-based configuration for security
- Policy-based by AD integration

Remote Management

- Device location
- Remote wipe/selective wipe
- Remote lock/unlock/password reset

Supported Devices

Smart Phones

- iPhone
- Google Android (2.x and later)
- BlackBerry
- Palm OS phones and devices
- Microsoft Phone 7

Tablet PCs

- Apple iPad
- Google Android (2.x and later)
- Lenovo
- Dell

More Information

Visit our website: <http://www.landesk.com/MobilityManager>

Speak with a LANDesk Mobility Manager product representative:

- 1.800.982.2130
- sales@landesk.com

For specific country offices and contact information, visit www.landesk.com

About LANDesk

LANDesk enterprise management solutions simplify IT complexity, protect endpoints, and improve IT service levels. Our systems lifecycle management, layered endpoint security, and IT service management technologies are reliable, easy to use and deliver rapid ROI.

Visit www.landesk.com for more information.

To the maximum extent permitted under applicable law, LANDesk assumes no liability whatsoever, and disclaims any express or implied warranty, relating to the sale and/or use of LANDesk products including liability or warranties relating to fitness for a particular purpose, merchantability, or infringement of any patent, copyright or other intellectual property right, without limiting the rights under copyright.

LANDesk retains the right to make changes to this document or related product specifications and descriptions, at any time, without notice. LANDesk makes no warranty for the use of this document and assumes no responsibility for any errors that can appear in the document nor does it make a commitment to update the information contained herein. For the most current product information, please visit www.landesk.com.

Copyright © 2011, LANDesk Software, Inc. and its affiliates. All rights reserved. LANDesk and its logos are registered trademarks or trademarks of LANDesk Software, Inc. and its affiliates in the United States and/or other countries. Other brands and names may be claimed as the property of others.

LSI-1023 11/11 BB/SD/AZUU

