

Sparxent präsentiert:

Was ist neu in LANDesk® V9 Service Pack 3?

*Bernhard Koch
Presales Manager*

Agenda

- Stabilisierung des Core Servers
 - Entstehung eines Service Pack
 - Plattform Erweiterung
- Software Management
 - Remote Control
 - Reporting
 - Security
 - Provisioning
 - Softwareverteilung
 - Software License Monitoring
- Cloud Delivery
 - Out of Network Management
 - Cloud Service Appliance

Strategische Themen



Stabilisierung des Core

- Platform Enhancements



Software Management

- Provisioning
- Security
- Reporting
- Remote Control
- Software License Monitoring
- Software Distribution



Cloud Delivery

- Out of Network Management
- Cloud Service Appliance

Stabilisierung des Core Servers

LANDesk 9.0 SP 3

Code Complete	Beta	Release Candidate	RTM
<i>August</i>	<i>October</i>	<i>November</i>	<i>December</i>

v9 SP3

Platforms

- Oracle 11gR2 WIN2008r2
- Red Hat 6
- Support Apple OS X 10.7 (Lion)

Mac agent

- Improved patching process

SLM

- Manufacturer normalization
- ESID removal
- ADP enhancements
- Edit SLM usage

Provisioning

- WinPE 3.1
- HII usability improvements
- Error code enhancements
- Install action to force Reboot

RBA

- Teams in 9.0 Web console
- Multi-Tenancy (Teaming and Scopes)

Remote Control

- Multiple monitor
- Dynamic scaling
- Auto detect CSA mode

Reporting

- Improved filtering and sorting
- Better security of reports
- Additional reports

SWD

- LaunchPad enhancements
- Better UAC support

Patch and Security

- Dashboard
- Security Activity enhancements
- Match industry standards severities
- Postpone patching until logoff

Third-party certificate (CSA)

Sustaining Defects

Over 450 reported defects resolved
(average SP = ~150)

Plattform Erweiterung

Windows Plattformen



- Windows Server 2008 R2

Apple Plattformen



- Mac OS X 10.7 Lion

*Nix Plattformen

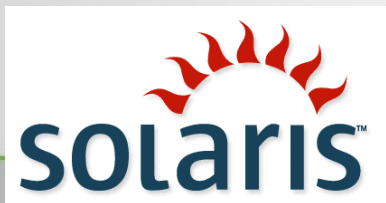


- CentOS 5 32-bit & 64-bit
- HP-UX 11.11 PA RISC 64-bit
- HP UX 11.23/11.31 Itanium 64-bit
- Red Hat Linux 6
- Solaris 10 (SPARC 64-bit & x86 64-bit)
 - Requires Update 8 or Later
- SuSE Linux Enterprise Server 11 64-bit

Datenbank Plattformen



- Oracle 11g R2
- SQL 2008 R2



SUSE
Linux Enterprise Server

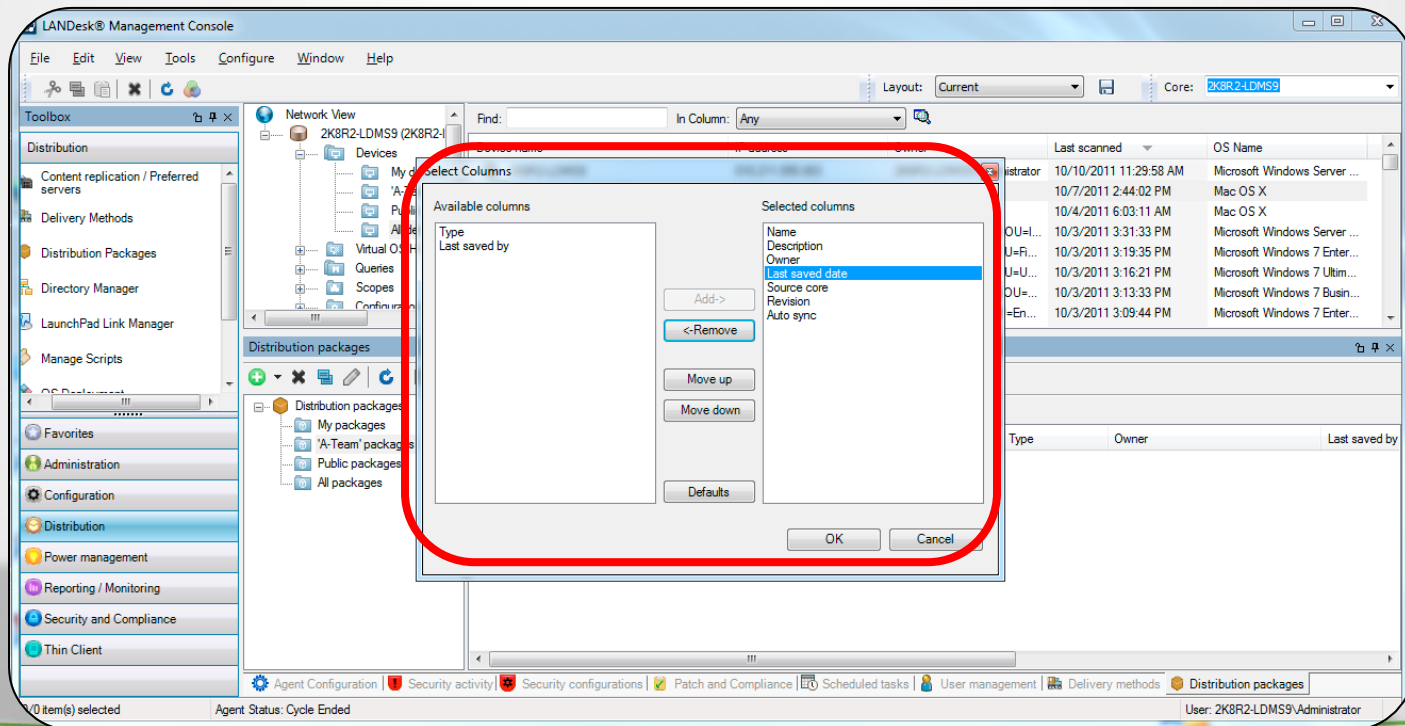
Software Management

Konsole

Tool für Spalten-Auswahl



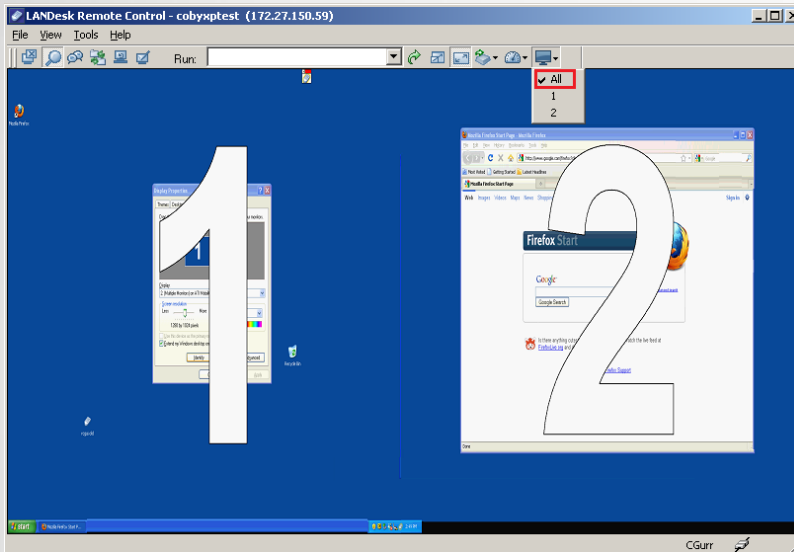
- Hinzufügen/Entfernen von sichtbaren Spalten, entsprechend der verfügbaren Daten für den gewählten Bereich
- Sortierung der Reihenfolge der sichtbaren Spalten
- Alle Spalten Sets anpassbar in der 32-bit Konsole



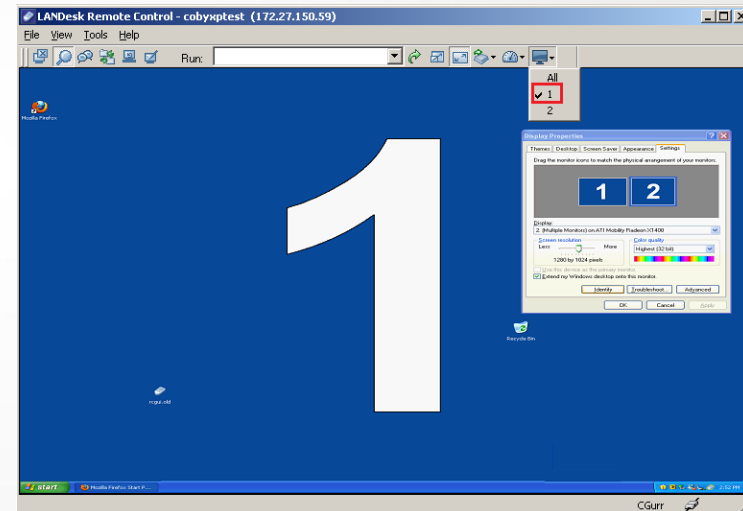
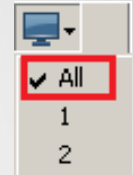
The screenshot displays the LANDesk Management Console interface. A 'Select Columns' dialog box is open, allowing users to customize the columns shown in the data table. The dialog is divided into two sections: 'Available columns' and 'Selected columns'. In the 'Available columns' section, 'Type' and 'Last saved by' are listed. In the 'Selected columns' section, 'Name', 'Description', 'Owner', 'Last saved date', 'Source core', 'Revision', and 'Auto sync' are listed. The 'Last saved date' option is currently selected and highlighted in blue. The dialog includes buttons for 'Add->', '<-Remove', 'Move up', 'Move down', and 'Defaults'. The background shows a network view of a server and a table of system information.

	Last scanned	OS Name
Administrator	10/10/2011 11:29:58 AM	Microsoft Windows Server ...
	10/7/2011 2:44:02 PM	Mac OS X
	10/4/2011 6:03:11 AM	Mac OS X
OU=...	10/3/2011 3:31:33 PM	Microsoft Windows Server ...
U=Fr...	10/3/2011 3:19:35 PM	Microsoft Windows 7 Enter...
U=U...	10/3/2011 3:16:21 PM	Microsoft Windows 7 Ultim...
OU=...	10/3/2011 3:13:33 PM	Microsoft Windows 7 Busin...
=En...	10/3/2011 3:09:44 PM	Microsoft Windows 7 Enter...

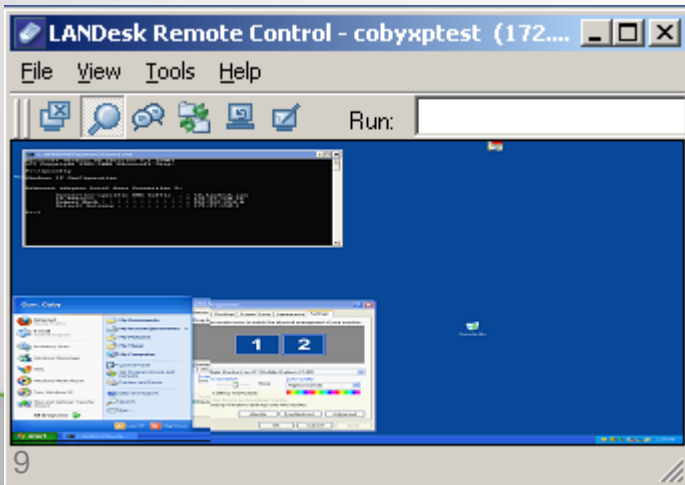
Remote Control Verbesserungen



Auswahl aller oder eines bestimmten Monitors



Automatische Anpassung der Bildschirmauflösung



Software Management

Reporting



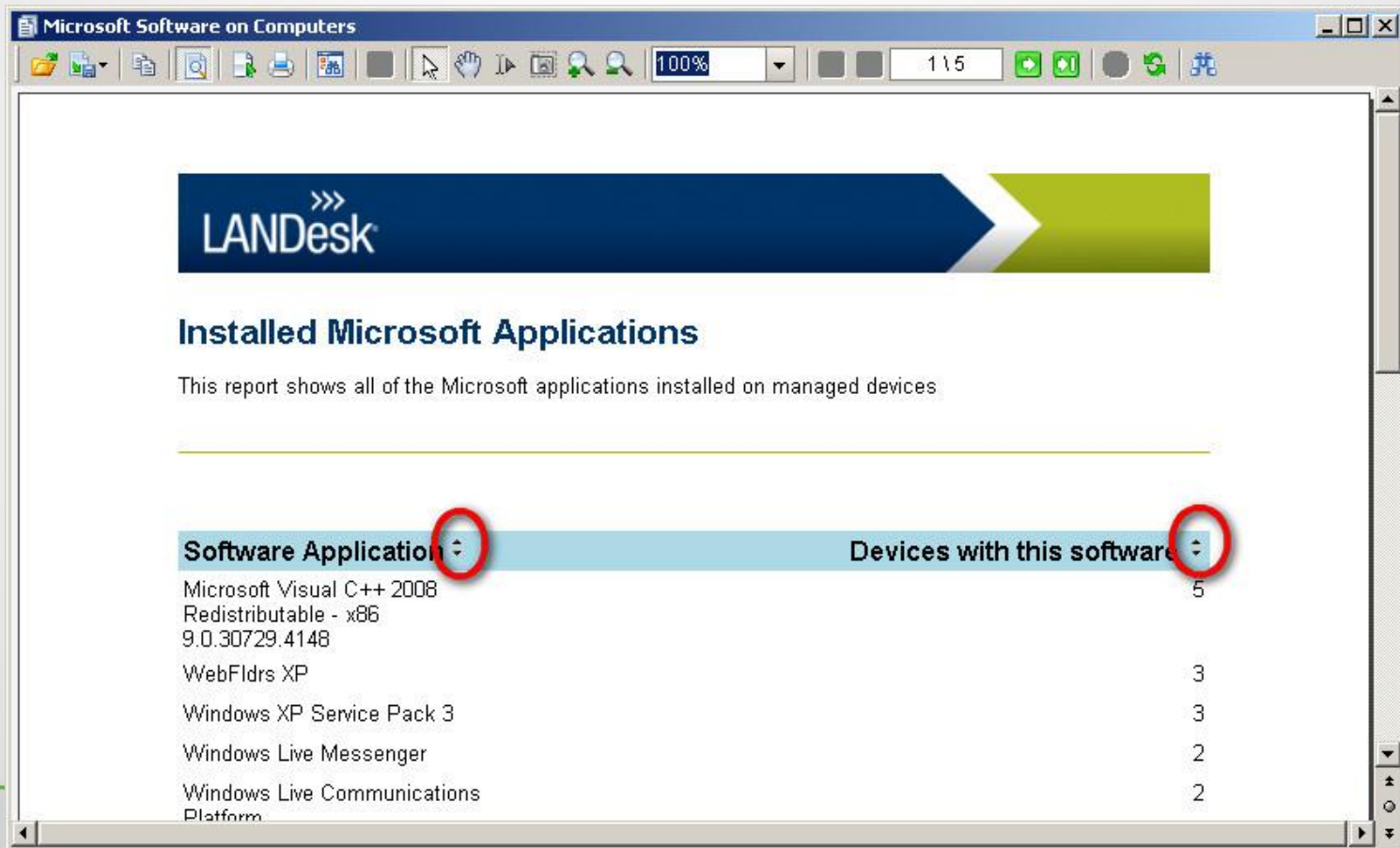
Verbesserungen beim Reporting

- Dynamische Sortierung
- Verbesserte Filterung
- Erweiterung eigener Reports
- Neue Reports
- Parameter-basierende Reports
- Erweiterte Security Reports



➤ Dynamische Sortierung

- Möglichkeit nach Spalten zu sortieren, nachdem der Report erstellt wurde



Microsoft Software on Computers

LANDesk

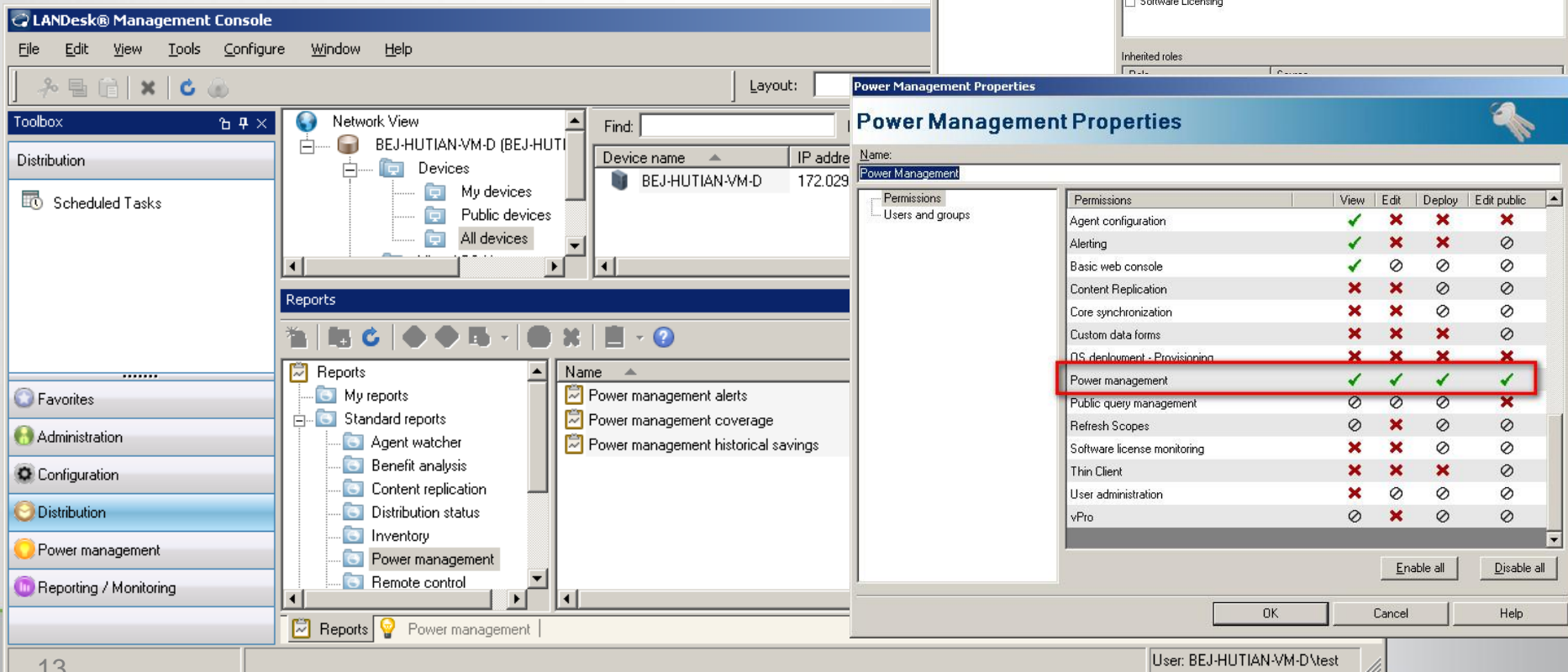
Installed Microsoft Applications

This report shows all of the Microsoft applications installed on managed devices

Software Application	Devices with this software
Microsoft Visual C++ 2008 Redistributable - x86 9.0.30729.4148	5
WebFldrs XP	3
Windows XP Service Pack 3	3
Windows Live Messenger	2
Windows Live Communications Platform	2

➤ Verbesserte Sicherheit

- Anforderung: "Reports sollten nur für Benutzer verfügbar sein, wenn sie mindestens über Leserechte für diesen Bereich verfügen."



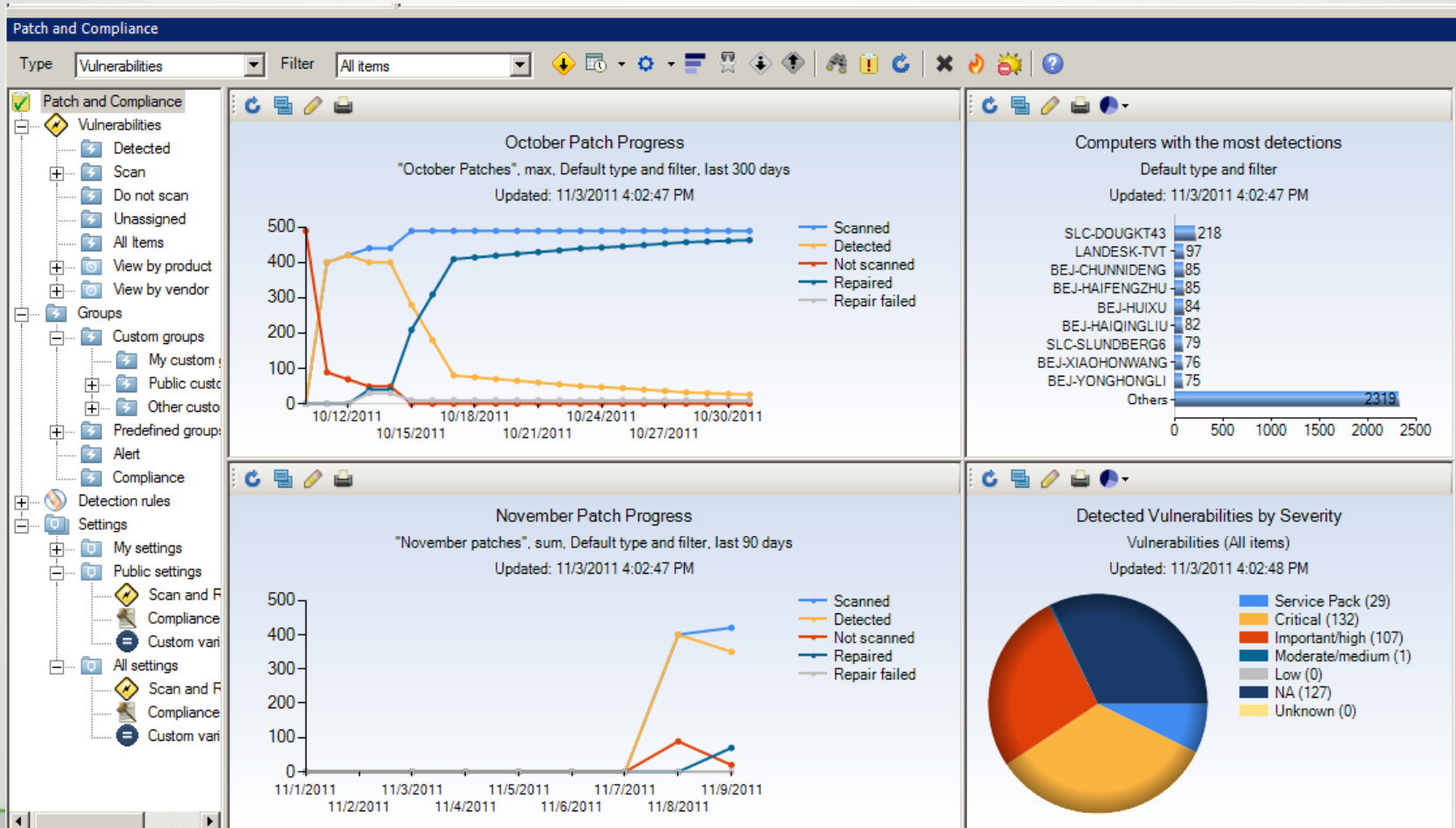
The screenshot shows the LANDesk@ Management Console interface. The 'Reports' section is expanded, showing a list of reports under 'Power management'. The 'Power management' report is highlighted with a red box. The 'Power Management Properties' dialog box is open, showing the 'Permissions' tab. The 'Power management' row in the permissions table is highlighted with a red box, indicating that it has full control permissions (View, Edit, Deploy, Edit public) for the user.

Permissions	View	Edit	Deploy	Edit public
Agent configuration	✓	✗	✗	✗
Alerting	✓	○	✗	○
Basic web console	✓	○	○	○
Content Replication	✗	✗	○	○
Core synchronization	✗	✗	○	○
Custom data forms	✗	✗	✗	○
OS deployment - Provisioning	✗	✗	✗	✗
Power management	✓	✓	✓	✓
Public query management	○	○	○	✗
Refresh Scopes	○	✗	○	○
Software license monitoring	✗	✗	○	○
Thin Client	✗	✗	✗	○
User administration	✗	○	○	○
vPro	○	✗	○	○

Software Management

Security

Dashboard – Win32 console



Flexible Patch Korrektur

- Download Kontrolle
- Download von Original Hersteller
- Fail back zum Core server
- Don't fail back zum Core Server

Reduzierung der Auswirkungen für die Benutzer: Patchen bei Abmeldung

When downloading patches via the gateway

Download from patch URL. Do not fall back on failure.

Download from core as usual.
Do not download. Fail the request.

Download from patch URL. Fall back to core on failure.

Download from patch URL. Do not fall back on failure.

Before repairing, installing, or uninstalling a patch

Wait to repair until user is logged off

Delay 5 minutes after logoff/lock

Automatische Pflege

➤ Automatische Patch Säuberung

- Löschung nicht benutzter Patche
- Freigabe Disk Space
- Reduzierung von Datei-
Replizierung

Patch cleanup

Delete patches for missing, "Do not scan", and "Unassigned" definitions

Also delete patches for undetected rules in definitions published more than days ago

Use this tool to disable rules that are currently replaced (superseded) by other definitions in your environment. Only rules that are replaced by an enabled definition will be disabled.

Disable these replaced rules

For selected definitions

Rules in the selected definitions

Rules that the selected definitions replace

All replaced rules

Action

Set status:

Scan

Set autofix

Disable any rules this definition replaces

Disable any rules this definition replaces

➤ Supercedence Management

- Entfernung überholter Regeln
- Automatische Deaktivierung
ersetzter Regeln vom Content
download
- Reduzierung der End-Point Scan Zeit



Software Management

Provisioning

Benutzerfreundlich

- Erkennung HII Treiber im Betrieb durch PCI Hersteller/Hardware ID
- Optimiertes Management der Treiberdatenbank
- Keine Installation von WAIK notwendig
- Installations-Scripte laufen fehlerfrei in Provisioning
- WinPE 3.1 (Treiber-basierend auf Windows 7)

Software Management

Softwareverteilung

Softwareverteilung

- Timeout bei Paket Installation
 - Abbruch der Installation nach einer definierten Zeit möglich

Check the box if you want to enable package installation timeout, and specify timeout period in hours.

Enable package installation timeout

Hours

Hours

- UAC Support

Select an account to use to distribute the package.

Accounts:

LocalSystem account.

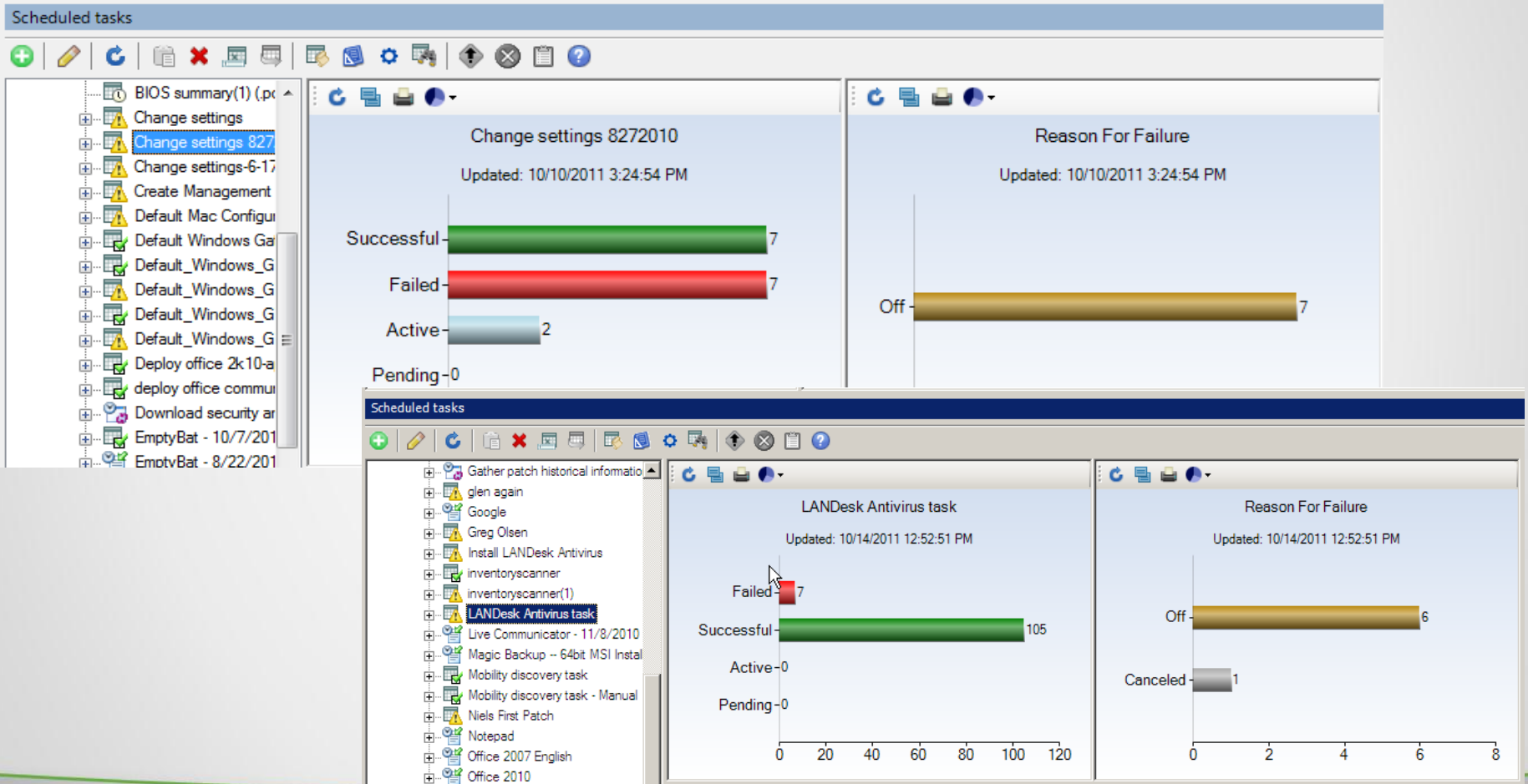
Current user's account.

Prompt for installation credentials if the current user has insufficient rights

Selecting the current user's account option to distribute the package will fail if a user is not logged in to the machine. If the software being distributed requires a reboot, the task may fail as well.

- Benutzer wird aufgefordert Administrator Passwort einzugeben
- Keine Anzeige, wenn Benutzer bereits Administrator ist

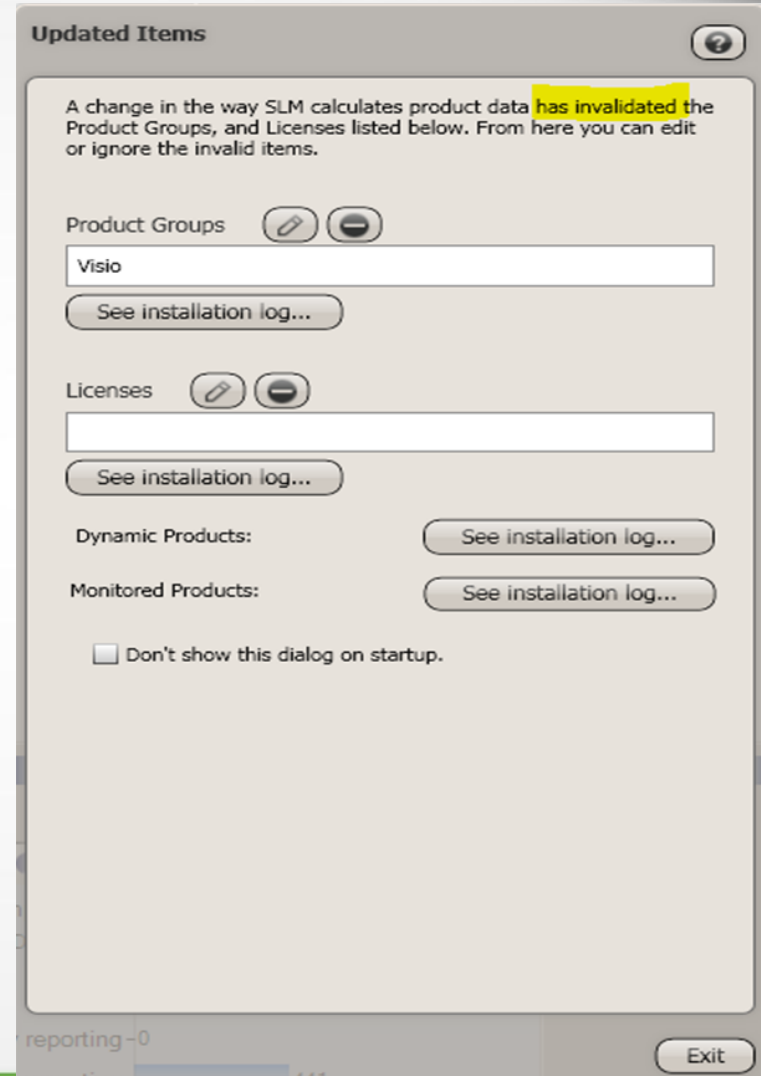
Dashboard – Win32 console



Software Management

Software License Monitoring

- SLM content wurde entfernt
 - Beim Login öffnet sich Fenster mit Software, die nicht mehr zugeordnet werden kann



Hersteller Normalisierung



Cloud Delivery

LANDesk 9.0 SP3

Out of Network Management

- Gateway Modus erforderte manuelle Einstellung
- Neue Funktion schaltet korrekten Modus automatisch ein
- Unterstützt 3rd Party signierte Zertifikate



Migrationspfad

- Upgrade von Version 9.0 SP2
- Alle Anwender mit aktivem Supportvertrag
- Download bei LANDesk (über Community)



Für mehr Informationen kontaktieren Sie uns bitte unter:

info.de@sparxent.com
Tel. +49 (0)89 54558 166

Vielen Dank für Ihre Aufmerksamkeit!